

# MISTERTON MADNESS *Cyclo-cross*



**CENTRAL CYCLO-CROSS LEAGUE**  
**SATURDAY 28<sup>th</sup> JANUARY**  
**MISTERTON HALL, N<sup>r</sup> LUTTERWORTH**  
*'Popular racing venue'*  
**Racing for all the family**  
**from 10:00am**  
**SPECTATORS WELCOME**

ENTRY DETAILS - <http://centralcxl.org.uk/> WELLAND VALLEY CC promotion - <http://wellandvalleycc.co.uk/>

## **MISTERTON MADNESS / BARNEY'S BASH Rd 15**

**SATURDAY 28th JANUARY 2017**

*'something for everyone'*

*Promoted by*

### ***Welland Valley Cycling Club***

The venue of Misterton Hall, Lutterworth, A4034,  
Junction 20, M1 is a popular cross circuit.  
The course consists of an excellent mix of fast woodland,  
gravel paths, grassland and tarmac.

#### **RACE DAY INFORMATION**

*Mrs Craven and Welland Valley Cycling Club are looking forward to welcoming all Central Cyclo-cross League members and 'crossers' from other regions on Saturday 28th January 2017 to Misterton Hall for Round 15 of the league.*

#### **EVENT TIMINGS**

<http://centralcxl.org.uk/>

**AS A MARK OF RESPECT FOR THE CRAIG FAMILY THERE WILL BE A MINUTE'S SILENCE AT THE START OF EACH RACE.**

## **ENTRY DETAILS**

## **ALL WELCOME**

**Online Entries close Tuesday night.**

<https://www.britishcycling.org.uk/events/details/155968/Welland-Valley-CC--Barney-s-Bash-/Central-Cyclo-Cross-League-Round-15>

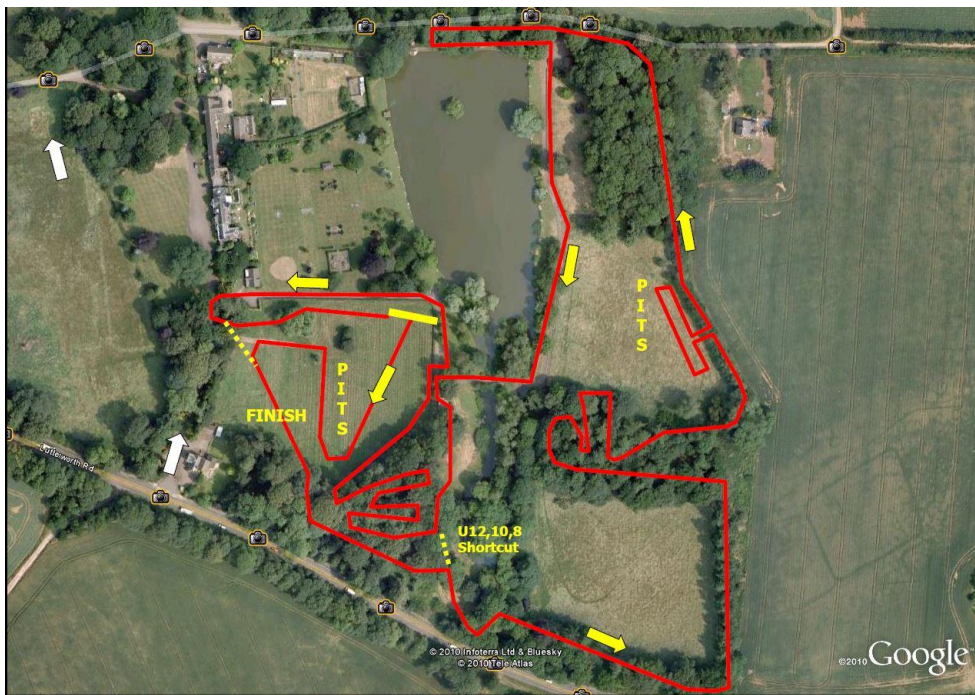
Unlimited entries on the day for all races.

Chip hire for non- league members - £10 returnable deposit.

MTBs and novice riders welcome.

## **COURSE.**

<https://www.mapmyride.com/routes/view/1415144122>



## **CAR PARKING.**

*On approach to Misterton Hall please follow the signs, you will be directed into the estate off the A4034.*

*A £1:00p donation per car will be requested, this money goes directly to Misterton Hall for the up keep of the grounds.*

*A one way system will be in place, you will exit the car parking via Chapel Lane.*

*A disabled parking will be provided at the front of the Hall.*

***Please ensure you take any litter home with you.***

## **HEAD QUARTERS**

*The HQ, First Aid, Signing On and Refreshments will be in the Rutland Room adjacent to the course.*

## **FIRST AID.**

*Gerrard Brooks - MJB First Aid Services will be providing First Aid on the day.*

## **REFRESHMENTS.**

*Hot and cold refreshments will be served.*

## **TOILET FACILITIES.**

*There are toilets facilities in The Rutland Room and facilities across on the far side of the lake.*

## **GAZEBOS/FLAGS/ TENTS.**

*Cycling Club Gazebos / Flags / Tents are very welcome in the start and finish meadow. Please ensure you take any litter home with you or use the bins provided.*

## **Joining us...**

[KidsRacing.co.uk](http://kidsracing.co.uk/) <http://kidsracing.co.uk/>

## **SPECTATORS.**

*You are very welcome to explore the estate. Please be aware that some sections of the course do not require course marking tape. The course is designed so that in certain areas you can see the competitors 3 or 4 times in one spot. Please use the clearly marked crossing points in the start / finish meadow.*

*You will notice areas marked outside of the course, this is to protect the thousands of bulbs.*

## **Finally....**

*Many thanks to Mrs Craven loves hosting this and other cycling events. Her enjoyment comes from watching you all participate and the friendliness of the sport. Mrs Craven can normally be found on car park duty mid-morning! If you get the opportunity to say 'thank you' please do.*

*Have a cracking days racing and enjoy.*

*Kind regards*

*Dean Barnett*

*Organiser*